

ATLAS RESIDENCE



Atlas Residence

Atlas Residence — is a vibrant, long-awaited urban project in the heart of Limassol

Where families can find their homes and working professionals their ideal office spaces, this commercial and residential mix complex is tailored for innovation, growth and quality living.



Smart investment solutions

Enjoy a diverse choice of amenities in a close proximity to the project: various shopping locations, health centers, banks, schools and green areas. This co-working project, as the future of real estate, available for a try-out.



major benefits

- Long awaited «live and work» project with offices and elite apartments in one cozy establishment;
- Posh and convenient location near Limassol center and business streets with best shops, restaurants, schools, city parks and cultural sites within a stroll;
- Residence facilities: gym, spa and business lounge;
- Sandy beaches within 5 minutes walk (600 meters);

- Luxury specs: parquet floors, marble in bathrooms, stylish built-in furniture, high ceilings (3.15 m);
- VRV air conditioning and water underfloor heating;
- Rich internal amenities – yoga room, spa, saunas, beauty room, kids area, laundry room, media room, 3 lobby's and a business lounge.



location

Welcome to the vibrant urban project in Agios Nicolaos

In the very heart of the city, in Agios Nicolaos, you may find a stunning complex of 4 residential and 1 commercial buildings. Next to the Griva Digeni street, which is the center of retail, business, health and proximity to all the necessary amenities. An enviable place to work and live at – close walking proximity to some of Limassol’s finest bars and restaurants, 15-minute drive to Molos park and the Old Town. A 25-minute walk to the eucalyptus Dasoudi park and the Tourist Area. A perfect balance between a dynamic working environment and the walking distance to all the finest entertainment.



exterior



luxurious lobby areas

Attention to the lobby interiors of premium residential complex Atlas Residence in the center of Limassol is evident in every detail.

The lobbies of residential blocks are crafted with premium materials and furnished with furniture and accessories from luxury brands.



luxurious lobby areas

The receptionist is available to welcome guests, receive your daily deliveries and assist with any inquiries.



choice of properties

residential – block a,b

| FLOOR | UNIT NO | PROPERTY TYPE | BED-ROOMS | BATH-ROOMS | PARK SPACES | INDOOR AREA M ² | COV. VERANDA M ² | UNCOV. VERANDA M ² | STO-RAGE M ² | TOTAL AREA M ² |
|----------------|-------------|---------------|-----------|------------|-------------|----------------------------|-----------------------------|-------------------------------|-------------------------|---------------------------|
| BLOCK A | | | | | | | | | | |
| 1st | A101 | Apartment | 2 | 2 | 1 | 90.69 | 24.14 | 5.87 | 10.20 | 155.42 |
| | A102 | Apartment | 3 | 2 | 1 | 110.29 | 47.46 | | 3.30 | 194.74 |
| | A104 | Apartment | 2 | 2 | 1 | 90.80 | 24.56 | 9.41 | 6.00 | 155.40 |
| | A105 | Apartment | 2 | 2 | 1 | 89.76 | 25.77 | | 9.50 | 149.70 |
| | A106 | Apartment | 1 | 1 | 1 | 57.55 | 26.76 | | 5.00 | 107.32 |
| 2nd | A201 | Apartment | 2 | 2 | 1 | 90.69 | 23.05 | | 8.40 | 146.43 |
| | A202 | Apartment | 3 | 2 | 1 | 110.29 | 38.20 | | 5.80 | 186.00 |
| | A204 | Apartment | 2 | 2 | 1 | 90.80 | 23.91 | | 7.00 | 146.21 |
| | A205 | Apartment | 2 | 2 | 1 | 89.76 | 26.15 | | 6.50 | 147.16 |
| | A206 | Apartment | 1 | 1 | 1 | 57.55 | 17.42 | | 4.30 | 95.28 |
| 3rd | A301 | Apartment | 2 | 2 | 1 | 90.69 | 22.56 | | 4.80 | 142.23 |
| | A302 | Apartment | 3 | 2 | 1 | 110.29 | 38.20 | | 4.80 | 185.00 |
| | A304 | Apartment | 2 | 2 | 1 | 90.80 | 23.91 | | 5.00 | 144.21 |
| | A305 | Apartment | 2 | 2 | 1 | 89.76 | 26.15 | | 5.00 | 145.66 |
| | A306 | Apartment | 1 | 1 | 1 | 57.55 | 17.42 | | 5.00 | 95.98 |
| 4th | A401 | Apartment | 2 | 2 | 1 | 90.69 | 22.56 | | 5.00 | 142.44 |
| | A402 | Apartment | 3 | 2 | 1 | 110.29 | 38.20 | | 5.00 | 185.20 |
| | A404 | Apartment | 2 | 2 | 1 | 90.80 | 23.91 | | 5.00 | 144.21 |
| | A405 | Apartment | 2 | 2 | 1 | 89.76 | 26.15 | | 5.00 | 145.66 |
| | A406 | Apartment | 1 | 1 | 1 | 57.55 | 17.42 | | 5.00 | 95.98 |
| 5th | A501 | Apartment | 2 | 2 | 1 | 90.69 | 22.56 | | 8.50 | 145.94 |
| | A502 | Apartment | 3 | 2 | 1 | 110.29 | 38.20 | | 5.50 | 185.70 |
| | A504 | Apartment | 2 | 2 | 1 | 90.80 | 23.91 | | 5.30 | 144.51 |
| | A505 | Apartment | 2 | 2 | 1 | 89.76 | 26.15 | | 5.30 | 145.96 |
| | A506 | Apartment | 1 | 1 | 1 | 57.55 | 17.42 | | 4.30 | 95.28 |

| FLOOR | UNIT NO | PROPERTY TYPE | BED-ROOMS | BATH-ROOMS | PARK SPACES | INDOOR AREA M ² | COV. VERANDA M ² | UNCOV. VERANDA M ² | STO-RAGE M ² | TOTAL AREA M ² |
|----------------|-------------|---------------|-----------|------------|-------------|----------------------------|-----------------------------|-------------------------------|-------------------------|---------------------------|
| BLOCK B | | | | | | | | | | |
| 1st | B101 | Apartment | 1 | 1 | 1 | 60.80 | 17.83 | | 10.20 | 155.42 |
| | B102 | Apartment | 3 | 3 | 1 | 120.10 | 36.30 | 11.84 | 3.30 | 194.74 |
| | B103 | Apartment | 2 | 2 | 1 | 93.42 | 34.58 | 9.05 | 6.00 | 155.40 |
| | B105 | Apartment | 2 | 2 | 1 | 90.98 | 26.65 | 8.83 | 9.50 | 149.70 |
| | B106 | Apartment | 3 | 3 | 1 | 119.00 | 31.05 | | 5.00 | 107.32 |
| 2nd | B201 | Apartment | 1 | 1 | 1 | 60.80 | 17.83 | | 8.40 | 146.43 |
| | B202 | Apartment | 3 | 3 | 1 | 120.10 | 36.30 | | 5.80 | 186.00 |
| | B203 | Apartment | 2 | 2 | 1 | 93.42 | 34.58 | | 7.00 | 146.21 |
| | B205 | Apartment | 2 | 2 | 1 | 90.98 | 26.65 | | 6.50 | 147.16 |
| | B206 | Apartment | 3 | 3 | 1 | 119.00 | 31.05 | | 4.30 | 95.28 |
| 3rd | B301 | Apartment | 1 | 1 | 1 | 60.80 | 17.83 | | 4.80 | 142.23 |
| | B302 | Apartment | 3 | 3 | 1 | 120.10 | 36.30 | | 4.80 | 185.00 |
| | B303 | Apartment | 2 | 2 | 1 | 93.42 | 34.58 | | 5.00 | 144.21 |
| | B305 | Apartment | 2 | 2 | 1 | 91.30 | 26.65 | | 5.00 | 145.66 |
| | B306 | Apartment | 3 | 3 | 1 | 119.26 | 31.05 | | 5.00 | 95.98 |
| 4th | B401 | Apartment | 1 | 1 | 1 | 60.80 | 17.67 | | 5.00 | 142.44 |
| | B402 | Apartment | 3 | 3 | 1 | 119.00 | 36.15 | | 5.00 | 185.20 |
| | B403 | Apartment | 2 | 2 | 1 | 93.42 | 34.58 | | 5.00 | 144.21 |
| | B405 | Apartment | 2 | 2 | 1 | 90.80 | 26.65 | | 5.00 | 145.66 |
| | B406 | Apartment | 3 | 3 | 1 | 119.26 | 31.05 | | 5.00 | 95.98 |
| 5th | B501 | Apartment | 1 | 1 | 1 | 60.80 | 17.83 | | 8.50 | 145.94 |
| | B502 | Apartment | 3 | 3 | 1 | 120.10 | 36.30 | | 5.50 | 185.70 |
| | B503 | Apartment | 2 | 2 | 1 | 93.42 | 34.58 | | 5.30 | 144.51 |
| | B505 | Apartment | 2 | 2 | 1 | 90.98 | 26.65 | | 5.30 | 145.96 |
| | B506 | Apartment | 3 | 3 | 1 | 119.00 | 31.05 | | 4.30 | 95.28 |



choice of properties

residential – block c,d

| FLOOR | UNIT NO | PROPERTY TYPE | BED-ROOMS | BATH-ROOMS | PARK SPACES | INDOOR AREA M ² | COV. VERANDA M ² | UNCOV. VERANDA M ² | STO-RAGE M ² | TOTAL AREA M ² |
|----------------|-------------|---------------|-----------|------------|-------------|----------------------------|-----------------------------|-------------------------------|-------------------------|---------------------------|
| BLOCK C | | | | | | | | | | |
| 1st | C101 | Apartment | 1 | 1 | 1 | 60.81 | 17.84 | | 5.00 | 101.44 |
| | C102 | Apartment | 3 | 3 | 1 | 120.10 | 36.28 | 11.84 | 4.85 | 208.45 |
| | C103 | Apartment | 1 | 1 | 1 | 55.49 | 20.40 | 9.05 | 4.90 | 107.01 |
| | C104 | Studio | 1 | 1 | 1 | 37.67 | 14.65 | | 5.00 | 69.16 |
| | C105 | Apartment | 2 | 2 | 1 | 90.88 | 27.11 | 8.83 | 5.00 | 158.51 |
| | C106 | Apartment | 3 | 3 | 1 | 118.80 | 31.20 | | 5.00 | 188.93 |
| 2nd | C201 | Apartment | 1 | 1 | 1 | 60.81 | 17.07 | | 4.90 | 100.40 |
| | C202 | Apartment | 3 | 3 | 1 | 120.10 | 36.28 | | 5.00 | 196.76 |
| | C203 | Apartment | 1 | 1 | 1 | 55.49 | 20.40 | | 5.00 | 98.06 |
| | C204 | Studio | 1 | 1 | 1 | 37.67 | 14.65 | | 5.00 | 69.16 |
| | C205 | Apartment | 2 | 2 | 1 | 90.88 | 27.11 | | 5.00 | 149.68 |
| | C206 | Apartment | 3 | 3 | 1 | 118.80 | 31.20 | | 5.00 | 188.93 |
| 3rd | C301 | Apartment | 1 | 1 | 1 | 60.81 | 17.07 | | 5.00 | 100.50 |
| | C302 | Apartment | 3 | 3 | 1 | 120.10 | 36.28 | | 5.00 | 196.76 |
| | C303 | Apartment | 1 | 1 | 1 | 55.49 | 20.40 | | 5.10 | 98.16 |
| | C304 | Studio | 1 | 1 | 1 | 37.67 | 14.65 | | 5.40 | 69.56 |
| | C305 | Apartment | 2 | 2 | 1 | 90.88 | 27.11 | | 5.00 | 149.68 |
| | C306 | Apartment | 3 | 3 | 1 | 118.80 | 31.20 | | 5.40 | 189.33 |
| 4th | C401 | Apartment | 1 | 1 | 1 | 60.81 | 17.98 | | 5.00 | 101.61 |
| | C402 | Apartment | 3 | 3 | 1 | 120.10 | 36.28 | | 5.10 | 196.86 |
| | C403 | Apartment | 1 | 1 | 1 | 55.49 | 20.40 | | 5.00 | 98.06 |
| | C404 | Studio | 1 | 1 | 1 | 37.67 | 14.65 | | 5.40 | 69.56 |
| | C405 | Apartment | 2 | 2 | 1 | 90.88 | 27.11 | | 5.40 | 150.08 |
| | C406 | Apartment | 3 | 3 | 1 | 119.21 | 31.20 | | 12.55 | 196.99 |
| 5th | C501 | Apartment | 1 | 1 | 1 | 60.81 | 17.07 | | 4.30 | 99.80 |
| | C502 | Apartment | 3 | 3 | 1 | 120.10 | 36.28 | | 4.20 | 195.96 |
| | C503 | Apartment | 1 | 1 | 1 | 55.49 | 20.40 | | 4.20 | 97.26 |
| | C504 | Studio | 1 | 1 | 1 | 37.67 | 14.65 | | 5.40 | 69.56 |
| | C505 | Apartment | 2 | 2 | 1 | 90.88 | 26.68 | | 5.40 | 149.55 |
| | C506 | Apartment | 3 | 3 | 1 | 118.80 | 31.20 | | 5.40 | 189.33 |

| FLOOR | UNIT NO | PROPERTY TYPE | BED-ROOMS | BATH-ROOMS | PARK SPACES | INDOOR AREA M ² | COV. VERANDA M ² | UNCOV. VERANDA M ² | STO-RAGE M ² | TOTAL AREA M ² |
|----------------|-------------|---------------|-----------|------------|-------------|----------------------------|-----------------------------|-------------------------------|-------------------------|---------------------------|
| BLOCK D | | | | | | | | | | |
| 1st | D101 | Apartment | 2 | 2 | 1 | 90.46 | 23.60 | | 4.90 | 135.46 |
| | D102 | Apartment | 1 | 1 | 1 | 55.12 | 18.92 | 6.00 | 5.40 | 96.15 |
| | D103 | Apartment | 1 | 1 | 1 | 55.12 | 18.85 | 6.00 | 5.40 | 96.07 |
| | D104 | Apartment | 2 | 2 | 1 | 92.39 | 25.73 | | 5.40 | 140.61 |
| | D105 | Apartment | 2 | 2 | 1 | 92.72 | 27.73 | | 7.55 | 145.43 |
| | D106 | Apartment | 1 | 1 | 1 | 57.55 | 18.36 | | 8.80 | 95.69 |
| 2nd | D201 | Apartment | 2 | 2 | 1 | 90.46 | 23.60 | | 8.80 | 139.36 |
| | D202 | Apartment | 1 | 1 | 1 | 55.12 | 18.92 | | 5.70 | 90.45 |
| | D203 | Apartment | 1 | 1 | 1 | 55.12 | 18.85 | | 9.80 | 94.47 |
| | D204 | Apartment | 2 | 2 | 1 | 92.39 | 25.73 | | 5.70 | 140.91 |
| | D205 | Apartment | 2 | 2 | 1 | 92.72 | 27.73 | | 9.10 | 146.98 |
| | D206 | Apartment | 1 | 1 | 1 | 57.55 | 18.36 | | 6.90 | 93.79 |
| 3rd | D301 | Apartment | 2 | 2 | 1 | 90.46 | 23.60 | | 4.20 | 134.76 |
| | D302 | Apartment | 1 | 1 | 1 | 55.12 | 18.92 | | 4.20 | 88.95 |
| | D303 | Apartment | 1 | 1 | 1 | 55.12 | 18.85 | | 5.00 | 89.67 |
| | D304 | Apartment | 2 | 2 | 1 | 92.39 | 25.73 | | 5.00 | 140.21 |
| | D305 | Apartment | 2 | 2 | 1 | 92.72 | 27.73 | | 5.00 | 142.88 |
| | D306 | Apartment | 1 | 1 | 1 | 57.55 | 18.36 | | 5.00 | 91.89 |
| 4th | D401 | Apartment | 2 | 2 | 1 | 90.46 | 23.60 | | 4.30 | 134.86 |
| | D402 | Apartment | 1 | 1 | 1 | 55.12 | 18.92 | | 5.10 | 89.85 |
| | D403 | Apartment | 1 | 1 | 1 | 55.12 | 18.85 | | 5.40 | 90.07 |
| | D404 | Apartment | 2 | 2 | 1 | 92.39 | 25.73 | | 4.20 | 139.41 |
| | D405 | Apartment | 2 | 2 | 1 | 92.72 | 27.73 | | 4.20 | 142.08 |
| | D406 | Apartment | 1 | 1 | 1 | 57.55 | 18.36 | | 5.50 | 92.39 |
| 5th | D501 | Apartment | 2 | 2 | 1 | 90.46 | 23.60 | | 5.40 | 135.96 |
| | D502 | Apartment | 1 | 1 | 1 | 55.12 | 18.92 | | 9.40 | 94.15 |
| | D503 | Apartment | 1 | 1 | 1 | 55.12 | 18.85 | | 9.30 | 93.97 |
| | D504 | Apartment | 2 | 2 | 1 | 92.39 | 25.73 | | 5.00 | 140.21 |
| | D505 | Apartment | 2 | 2 | 1 | 92.72 | 27.73 | | 11.10 | 148.98 |
| | D506 | Apartment | 1 | 1 | 1 | 57.55 | 18.36 | | 5.10 | 91.99 |



choice of properties

commercial

| FLOOR | UNIT NO | PROPERTY TYPE | BATHROOMS | PARK SPACES | INDOOR AREA M ² | COV. VERANDA M ² | SELLABLE AUXILIARY FLOOR AREA | PLANTER AREA M ² | ROOF TERRACE M ² | STORAGE M ² | COMMON AREA PER UNIT M ² | TOTAL AREA M ² |
|-------------------|---------|---------------|-----------|-------------|----------------------------|-----------------------------|-------------------------------|-----------------------------|-----------------------------|------------------------|-------------------------------------|---------------------------|
| COMMERCIAL | | | | | | | | | | | | |
| G | O001 | Shop | 1 | 6 | 161.20 | | mezzanine 87.88 | | | 225.18 | 55.42 | 529.68 |
| | O002 | Shop | 1 | 4 | 145.60 | | mezzanine 79.04 | | | 166.40 | 49.98 | 441.02 |
| | O003 | Shop | 1 | 4 | 161.20 | | mezzanine 88.04 | | | 219.90 | 55.46 | 524.60 |
| 1st | O101 | Office | 1 | 5 | 289.56 | 87.47 | | | | | 83.89 | 460.92 |
| | O102 | Office | 1 | 5 | 289.67 | 87.63 | | | | | 83.95 | 461.25 |
| 2nd | O201 | Office | 1 | 5 | 289.56 | 87.47 | | | | | 83.89 | 460.92 |
| | O202 | Office | 1 | 5 | 289.67 | 87.63 | | | | | 83.95 | 461.25 |
| 3rd | O301 | Office | 1 | 5 | 289.56 | 87.47 | | | | | 83.89 | 460.92 |
| | O302 | Office | 1 | 5 | 289.67 | 87.63 | | | | | 83.95 | 461.25 |
| 4th | O401 | Office | 1 | 5 | 289.56 | 90.98 | | | | | 84.67 | 465.21 |
| | O402 | Office | 1 | 5 | 289.67 | 91.13 | | | | | 84.73 | 465.53 |
| 5th | O501 | Office | 1 | 5 | 289.56 | 90.98 | | | | | 84.67 | 465.21 |
| | O502 | Office | 1 | 5 | 289.67 | 91.13 | | | | | 84.73 | 465.53 |
| 6th | O601 | Office | 1 | 5 | 289.56 | 90.98 | 7th 31.00 | 15.05 | 185.10 | | 91.57 | 703.26 |
| | O602 | Office | 1 | 5 | 289.67 | 91.13 | 7th 31.00 | 15.05 | 184.70 | | 91.62 | 703.17 |
| Common Roof | | | | | | | | | 131.43 | | | |



floor plans blocks a&b



1st floor



block a

| UNIT N° | TOTAL AREA M ² |
|---------|---------------------------|
| A101 | 9 |
| A102 | 194.74 |
| A104 | 155.40 |
| A105 | 149.70 |
| A106 | 107.32 |

block b

| UNIT N° | TOTAL AREA M ² |
|---------|---------------------------|
| B101 | 101.98 |
| B102 | 209.74 |
| B103 | 171.92 |
| B105 | 158.71 |
| B106 | 190.07 |

floor plans blocks a&b



2nd floor



block a

| UNIT N° | TOTAL AREA M ² |
|-------------|---------------------------|
| A201 | 146.43 |
| A202 | 186.00 |
| A204 | 146.21 |
| A205 | 147.16 |
| A206 | 95.28 |

block b

| UNIT N° | TOTAL AREA M ² |
|-------------|---------------------------|
| B201 | 101.78 |
| B202 | 197.20 |
| B203 | 162.67 |
| B205 | 149.88 |
| B206 | 189.37 |

floor plans blocks a&b



3rd floor



block a

| UNIT N° | TOTAL AREA M ² |
|---------|---------------------------|
| A301 | 142.23 |
| A302 | 185.00 |
| A304 | 144.21 |
| A305 | 145.66 |
| A306 | 95.98 |

block b

| UNIT N° | TOTAL AREA M ² |
|---------|---------------------------|
| B301 | 101.98 |
| B302 | 197.20 |
| B303 | 162.87 |
| B305 | 150.48 |
| B306 | 190.39 |

floor plans blocks a&b



4th floor



block a

| UNIT N° | TOTAL AREA M ² |
|-------------|---------------------------|
| A401 | 142.44 |
| A402 | 185.20 |
| A404 | 144.21 |
| A405 | 145.66 |
| A406 | 95.98 |

block b

| UNIT N° | TOTAL AREA M ² |
|-------------|---------------------------|
| B401 | 101.78 |
| B402 | 196.36 |
| B403 | 162.87 |
| B405 | 149.86 |
| B406 | 192.59 |

floor plans blocks a&b



5th floor



block a

| UNIT N° | TOTAL AREA M ² |
|-------------|---------------------------|
| A501 | 145.94 |
| A502 | 185.70 |
| A504 | 144.51 |
| A505 | 145.96 |
| A506 | 95.28 |

block b

| UNIT N° | TOTAL AREA M ² |
|-------------|---------------------------|
| B501 | 101.98 |
| B502 | 197.90 |
| B503 | 162.87 |
| B505 | 150.08 |
| B506 | 190.07 |

floor plans blocks c&d



1st floor



block c

| UNIT N° | TOTAL AREA M ² |
|---------|---------------------------|
| C101 | 101.44 |
| C102 | 208.45 |
| C103 | 107.01 |
| C104 | 69.16 |
| C105 | 158.51 |
| C106 | 188.93 |

block d

| UNIT N° | TOTAL AREA M ² |
|---------|---------------------------|
| D101 | 135.46 |
| D102 | 96.15 |
| D103 | 96.07 |
| D104 | 140.61 |
| D105 | 145.43 |
| D106 | 95.69 |

floor plans blocks c&d



2nd floor



block c

| UNIT N° | TOTAL AREA M ² |
|---------|---------------------------|
| C201 | 100.40 |
| C202 | 196.76 |
| C203 | 98.06 |
| C204 | 69.16 |
| C205 | 149.68 |
| C206 | 188.93 |

block d

| UNIT N° | TOTAL AREA M ² |
|---------|---------------------------|
| D201 | 139.36 |
| D202 | 90.45 |
| D203 | 94.47 |
| D204 | 140.91 |
| D205 | 146.98 |
| D206 | 93.79 |

floor plans blocks c&d



3rd floor



block c

| UNIT N° | TOTAL AREA M ² |
|---------|---------------------------|
| C301 | 100.50 |
| C302 | 196.76 |
| C303 | 98.16 |
| C304 | 69.56 |
| C305 | 149.68 |
| C306 | 189.33 |

block d

| UNIT N° | TOTAL AREA M ² |
|---------|---------------------------|
| D301 | 134.76 |
| D302 | 88.95 |
| D303 | 89.67 |
| D304 | 140.21 |
| D305 | 142.88 |
| D306 | 91.89 |

floor plans blocks c&d



4th floor



block c

| UNIT N° | TOTAL AREA M ² |
|---------|---------------------------|
| C401 | 101.61 |
| C402 | 196.86 |
| C403 | 98.06 |
| C404 | 69.56 |
| C405 | 150.08 |
| C406 | 196.99 |

block d

| UNIT N° | TOTAL AREA M ² |
|---------|---------------------------|
| D401 | 134.86 |
| D402 | 89.85 |
| D403 | 90.07 |
| D404 | 139.41 |
| D405 | 142.08 |
| D406 | 92.39 |

floor plans blocks c&d



5th floor



block c

| UNIT N° | TOTAL AREA M ² |
|---------|---------------------------|
| C501 | 99.80 |
| C502 | 195.96 |
| C503 | 97.26 |
| C504 | 69.56 |
| C505 | 149.55 |
| C506 | 189.33 |

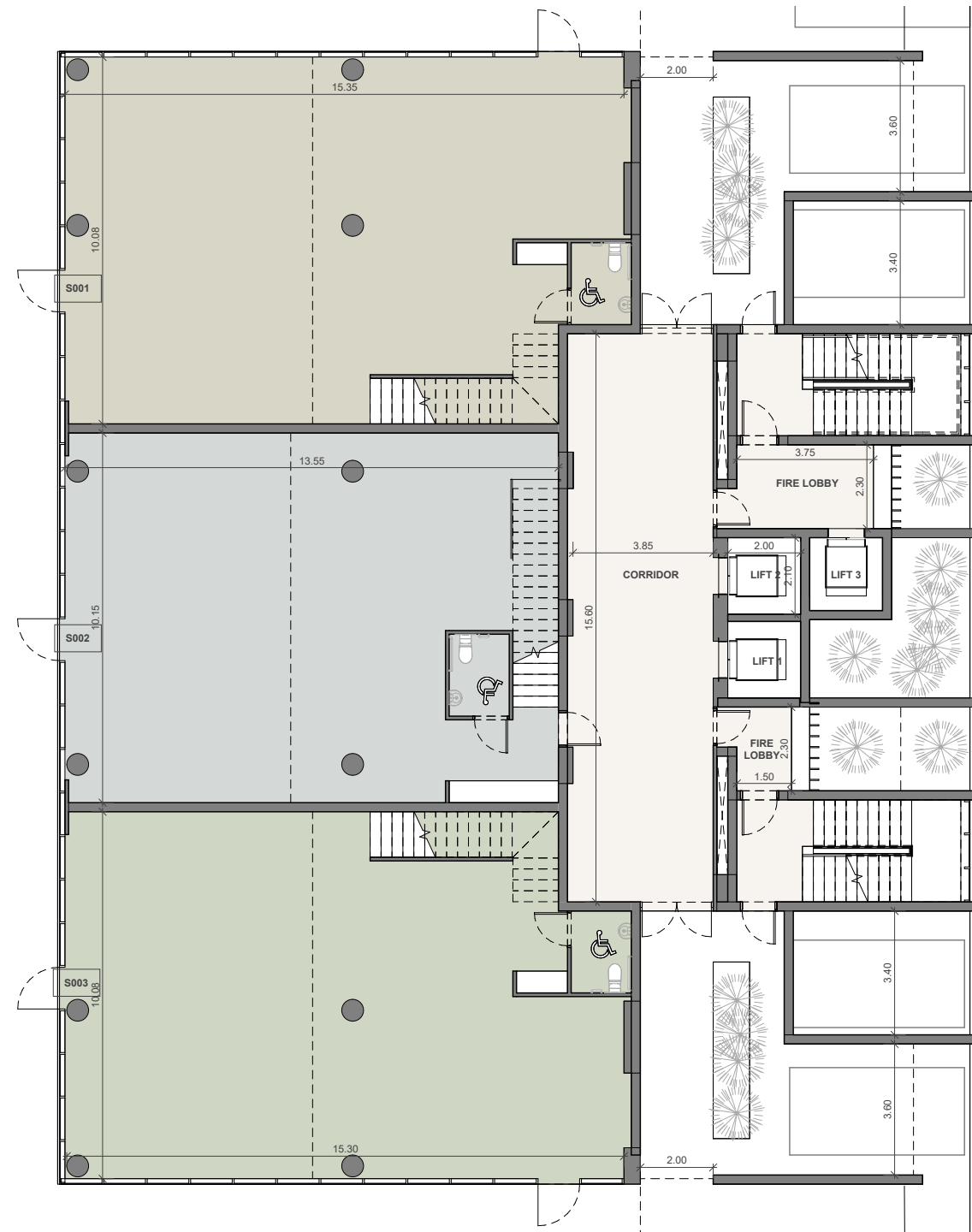
block d

| UNIT N° | TOTAL AREA M ² |
|---------|---------------------------|
| D501 | 135.96 |
| D502 | 94.15 |
| D503 | 93.97 |
| D504 | 140.21 |
| D505 | 148.98 |
| D506 | 91.99 |

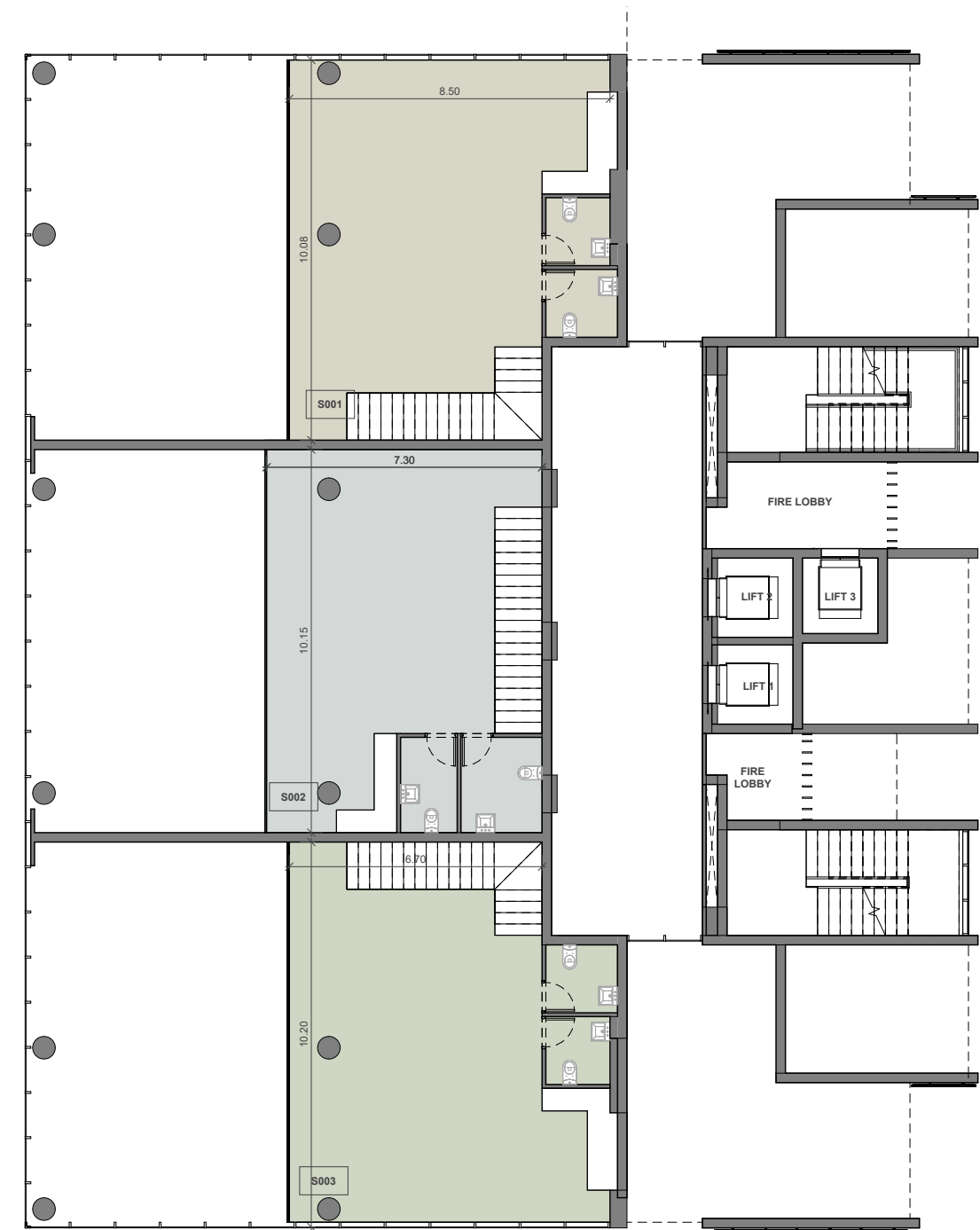
floor plans commercial block



ground floor



mezzanine

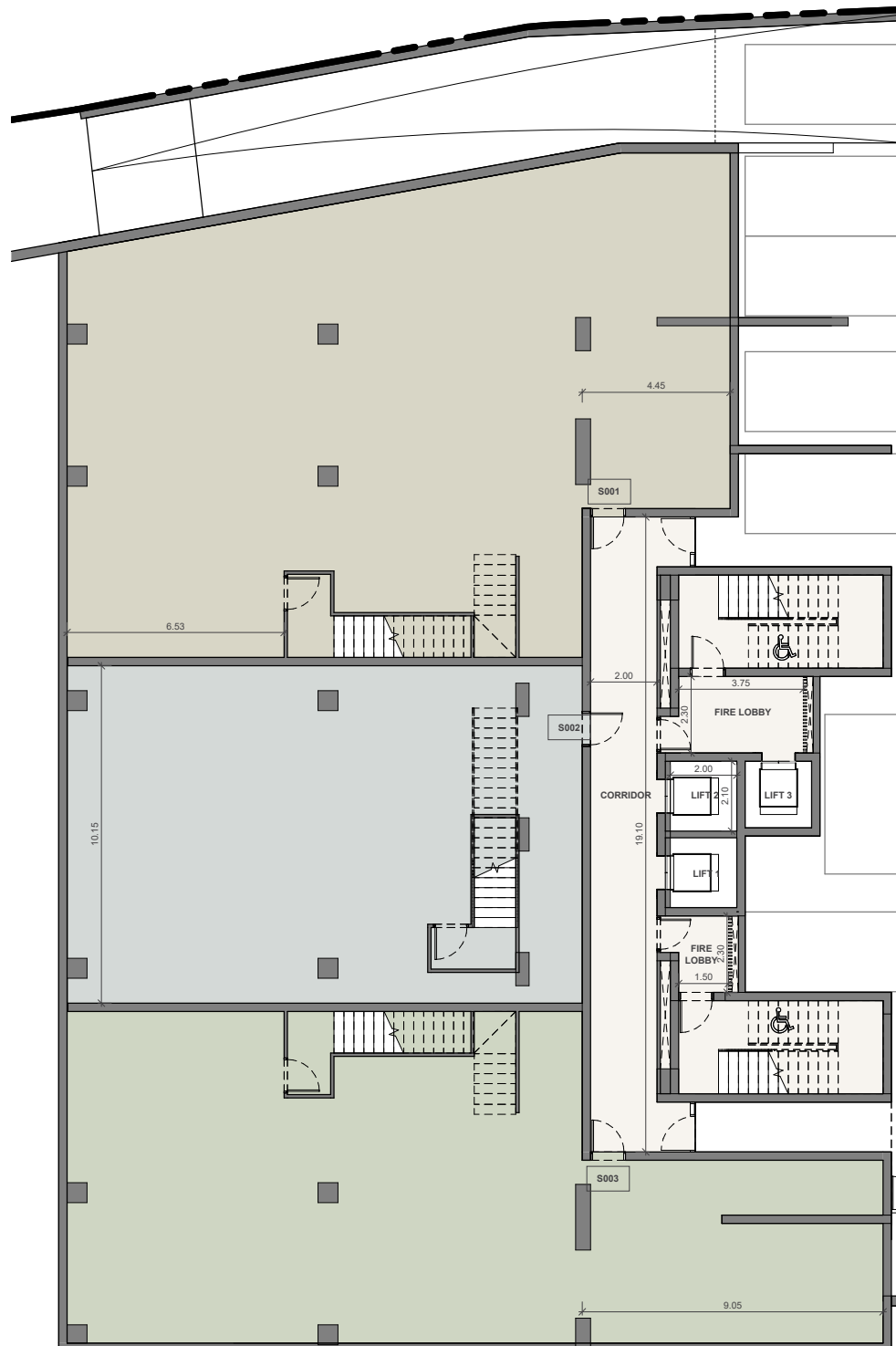


| UNIT N° | TOTAL AREA M ² |
|-------------|---------------------------|
| O001 | 529.68 |
| O002 | 441.02 |
| O003 | 524.60 |

floor plans commercial block



basement



1st floor



| UNIT N° | TOTAL AREA M ² |
|---------|---------------------------|
| O101 | 460.92 |
| O102 | 461.25 |

floor plans commercial block



2nd floor



| UNIT N° | TOTAL AREA M ² |
|---------|---------------------------|
| O201 | 460.92 |
| O202 | 461.25 |

3rd floor



| UNIT N° | TOTAL AREA M ² |
|---------|---------------------------|
| O301 | 460.92 |
| O302 | 461.25 |

floor plans commercial block



4th floor



| UNIT N° | TOTAL AREA M² |
|---------|---------------|
| O401 | 465.21 |
| O402 | 465.53 |

5th floor



| UNIT N° | TOTAL AREA M² |
|---------|---------------|
| O501 | 465.21 |
| O502 | 465.53 |

floor plans commercial block

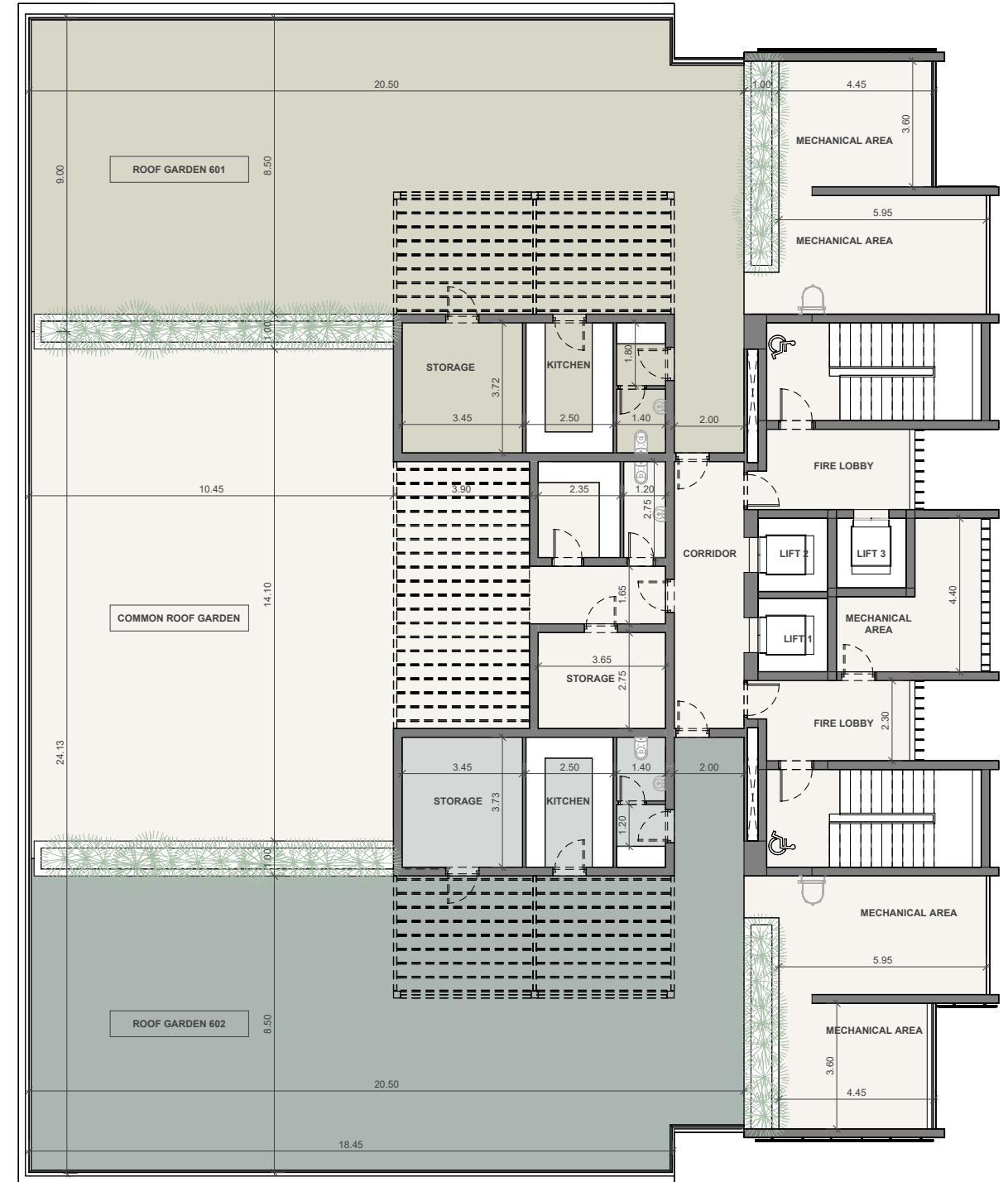


6th floor



| UNIT N° | TOTAL AREA M ² |
|-------------|---------------------------|
| O601 | 703.26 |
| O602 | 703.17 |

roof garden



| UNIT N° | TOTAL AREA M ² |
|--------------------|---------------------------|
| Common Roof | 131.43 |

| UNIT N° | TOTAL AREA M ² |
|-------------|---------------------------|
| O601 | 185.10 |
| O602 | 184.70 |

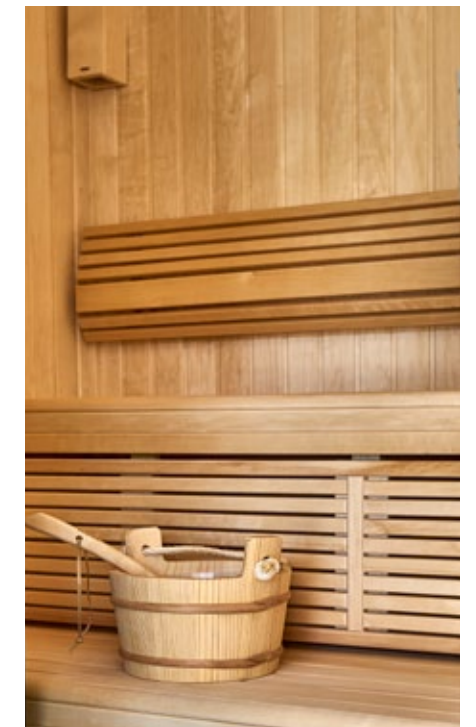
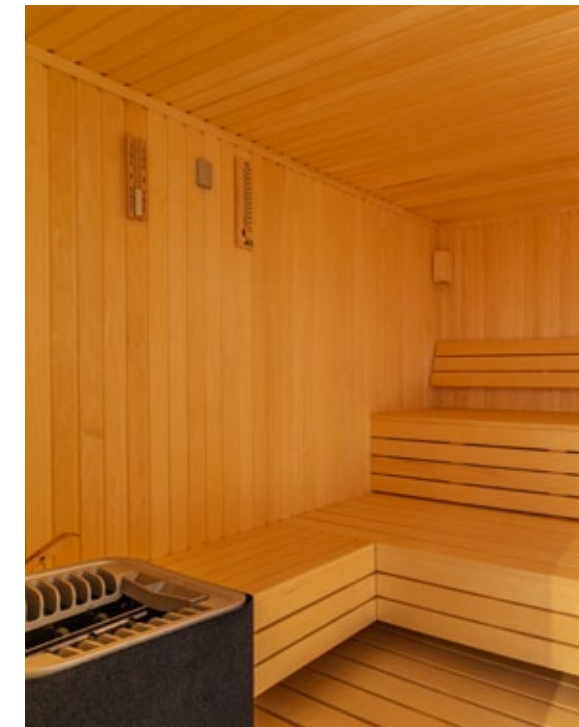
internal infrastructure

swimming pool

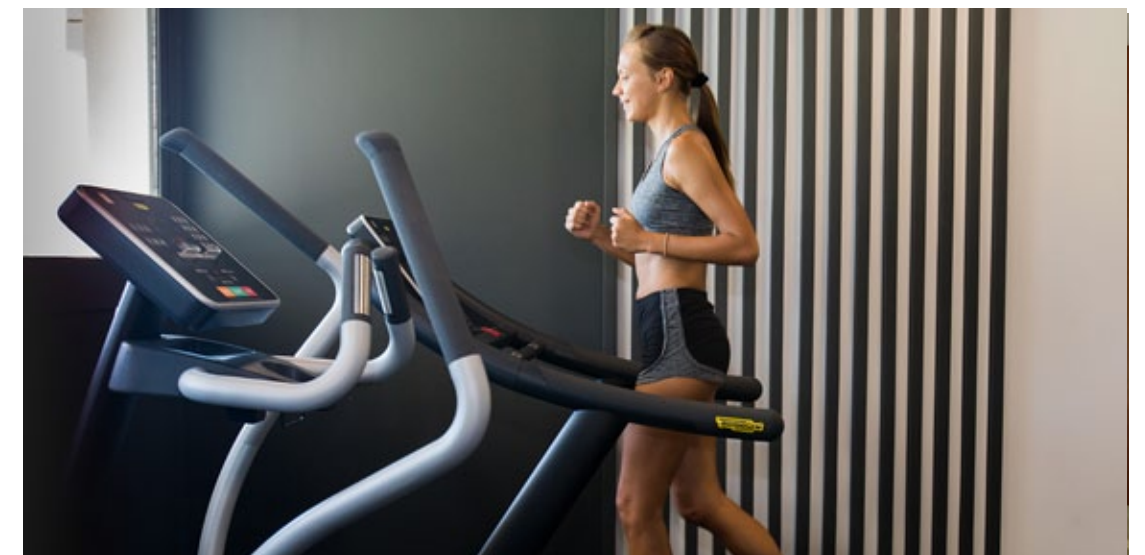


Signature amenities designed to suit all tastes and preferences

sauna



gym



internal infrastructure

co-working spaces



Introducing a variety of new facilities to enhance your well-being and happiness

yoga room



kids area



signature finishes – residential

prime

Every property is delivered with signature top standard finishes:

- Fully completed finishings;
- Semi-solid parquet floors in each room;
- Marble floor and walls in the toilets and bathrooms;
- High ceilings (3.15 m);
- Security and fireproof entrance doors;
- Water heated floors;
- Air conditioning;
- High standard sanitary ware from European brands;
- Thermal aluminum window frames with double glazing;
- High standard kitchen cabinets;
- High standard wardrobes from European brands;
- Soft closers;
- Door stoppers.

Note: movable furniture, home appliances & interior items are extras



signature finishes – commercial

shell & core

Design your future workspace according to your needs and vision.

- Shell & core finishings of the office spaces;
- Marble walls and floors in the restrooms;
- Ceramic tile floors in the verandas;
- Provisions for A/C in every office;
- High standard sanitary ware from European brands in common areas and restrooms;
- Thermal aluminum doors and window frames with double glazing;
- Provisions for electrical installations and lighting fittings;
- Provisions for plumbing-drainage, with hot and cold water and an instant heater included;
- No loose furniture is included;
- Keypad intercom at the lobby main entrance door.

